

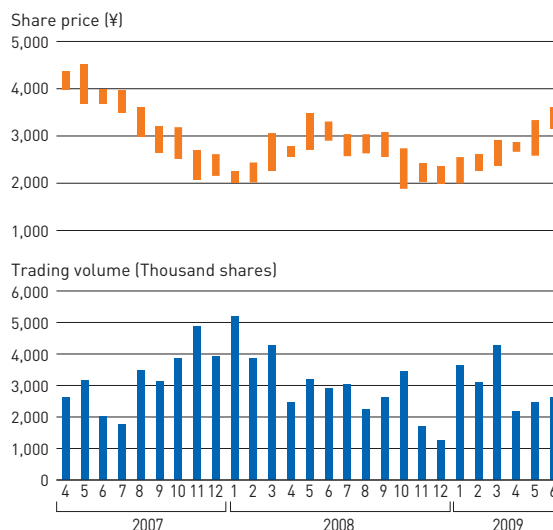
SHARE INFORMATION

(As of March 31, 2009)

Total Number of Authorized Shares	109,402,300 shares
Common Stock Issued	39,255,175 shares
Number of Shareholders	11,859
Settlement Date	March 31
Record Dates	Annual General Shareholders' Meeting: March 31 Year-end dividends: March 31 Interim dividends: September 30 Prior notice of extraordinary dividends payments made as required.
Share Trading Unit	100 shares
Newspaper Used for Notifications	Nihon Keizai Shimbun The Company discloses balance sheets, statements of income, and related information at: http://www.autobacs.co.jp/
Stock Listings	Osaka Securities Exchange Tokyo Stock Exchange
Independent Auditor	Deloitte Touche Tohmatsu*
Transfer Agent	The Sumitomo Trust and Banking Co., Ltd. 3-1, Yaesu 2-chome, Chuo-ku, Tokyo

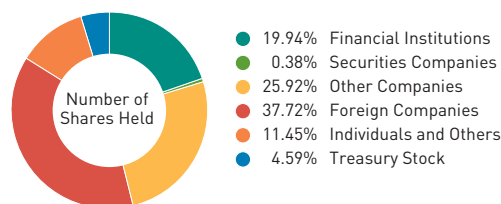
*From July, 2009, corporate name has been changed to Deloitte Touche Tohmatsu LLC.

Share Price Trend

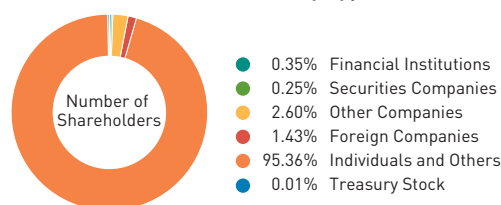


Note: Osaka Securities Exchange

Breakdown of Shareholders (by Size of Shareholding)



Breakdown of Shareholders (by Type)



MAJOR SHAREHOLDERS

Name or Trading Name	Number of Shares Held (Thousands)	Percentage of Total Shares Issued (%)
Ichigo Asset Trust	5,300	13.50
Sumino Holdings, Ltd.	5,157	13.14
Japan Trustee Service Bank, Ltd. (Trust Account)	1,616	4.12
Japan Trustee Service Bank, Ltd. (Trust Account 4)	1,492	3.80
Northern Trust Co. (AVFC) Sub A/C American Clients	1,453	3.70
The Silchester International Investors International Value Equity Trust	1,221	3.11
The Master Trust Bank of Japan, Ltd. (Trust Account)	1,001	2.55
The Yuumi Memorial Foundation for Home Health Care	1,000	2.55
Northern Trust Co. AVFC Re U.S. Tax Exempted Pension Funds	987	2.51
Sumisho Holdings, Ltd.	800	2.04
Total	20,031	51.02

Note: The number of treasury stocks held by the Company (1,800 thousand shares; percentage of shares held: 4.59%) is excluded from the abovementioned list of major shareholders due to the restrictions on the exercise of voting rights (as of March 31, 2009). In addition, the abovementioned 1,800 thousand shares of treasury stocks have been retired on May 22, 2009. As a result, the total number of issued shares amounts to 37,454,204 shares.